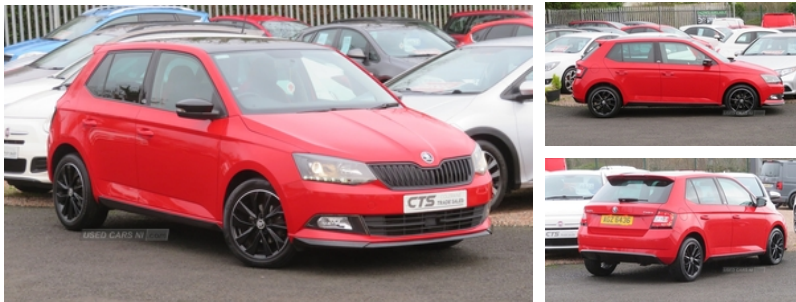


## Skoda Fabia 1.2 TSI 90 Monte Carlo 5dr | Jan 2016

**£7,975**

**\*\* MONTE CARLO \*\* PAN ROOF \*\* BLUETOOTH \*\* FULL HISTORY \*\***



### Vehicle Features

1.5L bottle holder in front door panels, 2 height adjustable rear headrests, 3 spoke leather multifunction sports steering wheel with red stitching, 3x3 point rear seatbelts, 60/40 split folding rear seat, ABS, Alarm with interior monitoring, Arkamys surround sound pack - Fabia, Auxiliary socket for external MP3 player, Black decorative inserts, Black door mirrors, Black radiator grille, Bluetooth system, Body colour bumpers, Body colour door handles, Body coloured rear spoiler, Bolero radio with telephone control, Boot stowage box, Cargo area storage tray, Cherry red centre console, Chrome Pack - Fabia, Cloth upholstery, Curtain airbags, DAB Digital radio, Driver + passenger vanity mirrors, Driver and passenger airbags, Driver and passenger side airbags, EDS, Electrically adjustable and heated door mirrors, Electric front windows, ESC with ASR, Exterior temperature gauge, Floor mats with red stitching, Folding grab handles, Front assistant collision mitigation, Front reading lights, Front seatbelt pretensioners, Front sports seats, HBA (Hydraulic Brake Assist), Heated rear window, Height/reach adjust steering wheel, Height adjustable driver's seat, Height adjustable front headrests, Height adjustable headlamps, Height adjustable passenger seat, Immobiliser, Interior light with delay, Intermittent rear wash/wipe, Leather gearshift, Leather handbrake, LED daytime running lights, Locking wheel bolts, Lower glovebox cover, Luggage load hooks, Maxi dot trip computer, Mirror Link, Panoramic sunroof, Parcel shelf, PAS, Passenger airbag deactivate switch, Pearl grey carpets, Pearl grey headlining, Pollen filter, Rear courtesy light, Rear storage trays, Remote central locking, Seatbelt warning, Service interval indicator, SmartLink, Storage compartment under front seats, Sunset glass from b-pillar back, Ticket holder, Tinted rear windows, Tinted windscreen, Two rear outer seat isofix location points, Tyre pressure monitor, USB and SD card

<b>Miles:</b>	55521
<b>Fuel Type:</b>	Petrol
<b>Transmission:</b>	Manual
<b>Colour:</b>	Red
<b>Engine Size:</b>	1197
<b>CO2 Emission:</b>	107
<b>Tax Band:</b>	B (£20 p/a)
<b>Body Style:</b>	Hatchback
<b>Insurance group:</b>	8E
<b>Reg:</b>	AGZ6436

### Technical Specs

DIMENSIONS	
<b>Length:</b>	3992mm
<b>Width:</b>	1732mm
<b>Height:</b>	1467mm
<b>Seats:</b>	5
<b>Luggage Capacity (Seats Up):</b>	322L
<b>Gross Weight:</b>	1564KG
<b>Max. Loading Weight:</b>	530KG

PERFORMANCE & ECONOMY	
<b>Fuel Consum. (Urban Cold):</b>	47.1MPG
<b>Fuel Consum. (Extra Urban):</b>	70.6MPG
<b>Fuel Consum. (Combined):</b>	60.1MPG
<b>Fuel Tank Capacity:</b>	45L
<b>Number Of Gears:</b>	5 SPEED
<b>Top Speed:</b>	113MPH
<b>Acceleration 0-100 km/h:</b>	10.9s
<b>Engine Power BHP:</b>	88.5BHP

